

Workshop:

Introduction to



Welcome the Rain 2010 | 23 October 2010
Presenters: Ted Labbe, Maren Murphy, Maia Nativ

Workshop Agenda

- What is Depave?
- How do we depave?
- How can you depave too?
- What do you need to know?
- How you can get involved





Mission

Inspire and promote the removal of unnecessary pavement from urban areas

Vision

Livable cities where people and wildlife thrive amidst clean air, clean water, and abundant, accessible greenspaces

About

- Project of non-profit City Repair
- All volunteer, grant-funded
- People-powered projects

Keywords

- Asphalt – surface made from oil sludge; softer than concrete
- Concrete – surface made from sand, cement, water; more durable and expensive
- Depave – to remove pavement
- Pavement – material used to pave an area
- Stormwater – water that originates during precipitation events
- Stormwater runoff – stormwater that does not soak (infiltrate) into the ground because of impervious surfaces (roofs, roads)
- Urban heat island effect – built up areas that are hotter than nearby rural areas, which increases energy demand, cooling costs, air pollution, and greenhouse gas emissions
- Urbanite – concrete chunks that can be reused

The Problem

Too much pavement contributes to stormwater runoff and the urban heat island effect, limits access to greenspace in cities, disconnects people from nature, and disproportionately impacts poor and minority communities in pavement-plagued neighborhoods.



The Solution

Community-driven pavement removal and greening projects on public and private land to:

1. Mitigate stormwater runoff
2. Infiltrate rainwater on-site
3. Restore natural habitat
4. Create new greenspaces and community gardens
5. Increase community environmental stewardship
6. Alleviate greenspace inequities

Stormwater Runoff



Image from Google

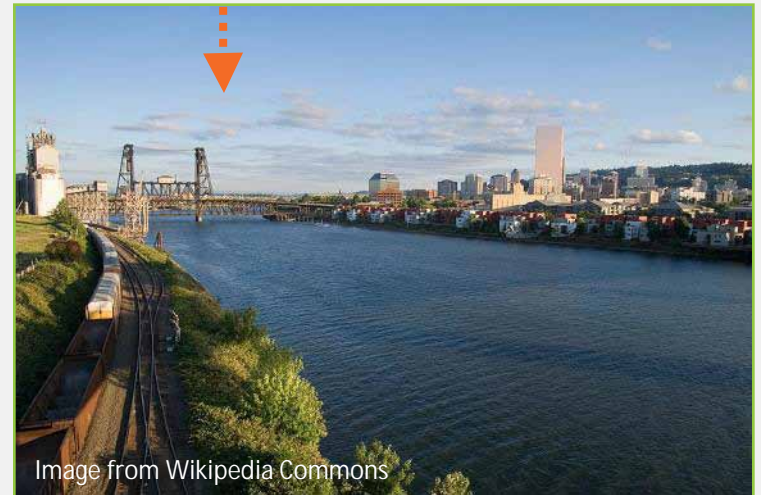


Image from Wikipedia Commons





Depave by the Numbers: 2008-2010

- 18 depaving events
- 54,000+ square feet of asphalt depaved
- 1 ½ entire city blocks depaved
- ~1.2 million gallons of stormwater runoff diverted from rivers and streams
- 700+ volunteers engaged at events

Created:

- 1 forest garden
- 1 pumpkin patch
- 1 landscaped entryway
- 2 Portland Community Gardens
- 3 vegetable gardens
- 3 school learning gardens and playscaped areas
- 4 bioswales
- 13 pockets for tree plantings

10 Steps to Paradise

1. Selection
2. Grantwriting
3. Planning
4. Outreach
5. Permitting
6. Prep
7. DEPAVE!
8. Rehabilitation
9. Post-Depave
10. Maintenance



1 Site Selection



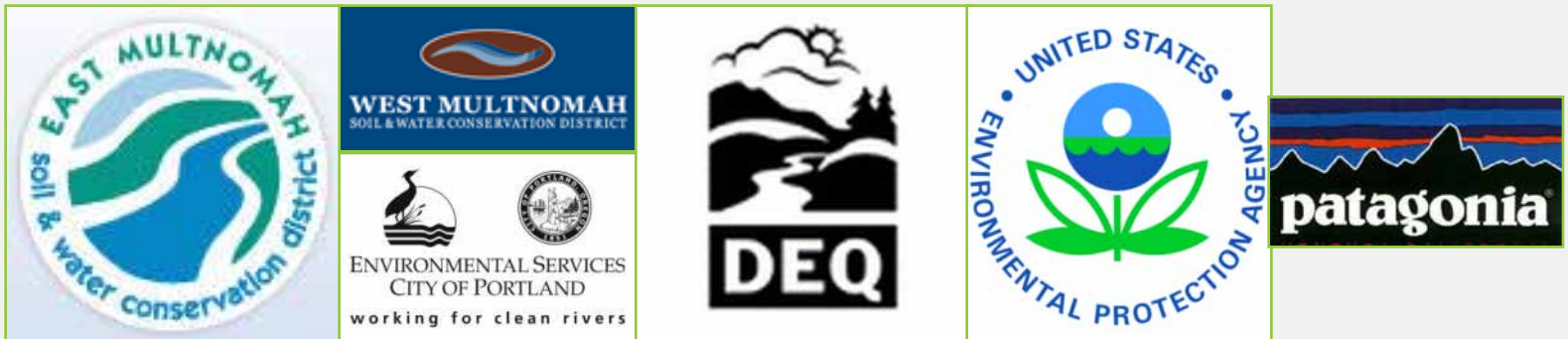


2 Grantwriting

- Volunteer grantwriting team works from October to March
- Grants cover:
 - Permits for depaving
 - Drop boxes & hauling
 - Soil rehabilitation
 - Food for volunteers
 - Event promotion

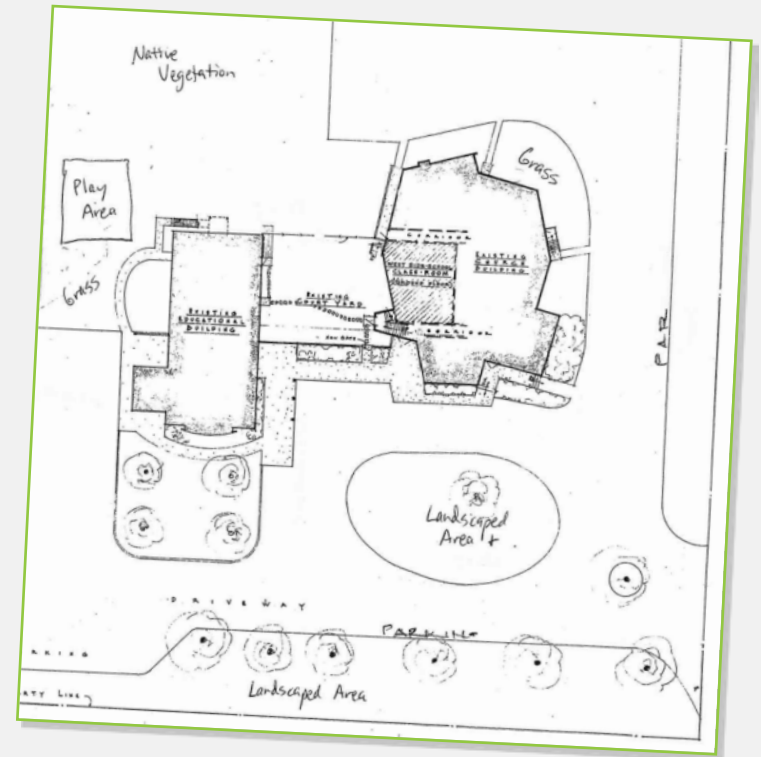
Funders

- East/West Multnomah Soil & Water Conservation Districts
- Portland Bureau of Environmental Services Community Watershed Stewardship Program
- Oregon Department of Environmental Quality 319 Grant
- EPA Environmental Justice Small Grants Program
- Patagonia
- You!



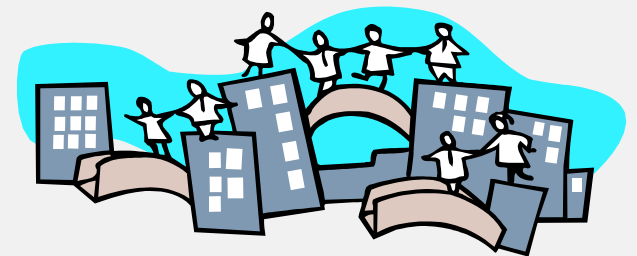
3 Site Planning

- Site history research
 - Land deeds
 - Assessors Maps
 - Sanborn Maps
- Soil testing
 - Nutrient levels: nitrogen, phosphorus, potassium, soil acidity
 - Toxins: Lead
- Vision for post-depaving
- Develop site plan



4 Community Outreach

- Engage site hosts, site community, surrounding neighbors and site owners, partners
- Coordinate efforts and event planning
- Presence at community events
 - Welcome the Rain
 - Community Resource Fairs
 - Farmers Markets
- Attend Neighborhood and Business Association meetings
- Distribute postcards and event flyers
- Draft press releases for media
- Invite community leaders and partners
- Create an event out of depaving!





5 Site Permitting

Portland Bureau of Development Services
Site Development Permit:

“Site development permits are issued for work such as landslide repair, clearing, tree cutting, grading, private streets, construction and groundwork related to new subdivisions, where no building or structure is altered, moved or constructed.”



- Why does depaving require a permit?
 - Construction
 - Erosion control
 - Parking
 - Post-depaving development
- Factors to consider during permitting:
 - Previous uses
 - Complexity of project
 - Parking
 - Stormwater mitigation
 - Utility lines: gas, sewer, etc.
- Can take up to 4-6 weeks for approval
 - Site permit approval is essential before moving on to depaving



6 Prep Day

- Prep site 1-2 weeks prior to event
 - Call 811 before you saw!
- Walk-behind concrete saw
 - Need water hook-up
 - Diamond saw blade
- Cut into 2'x3' grid "brownies"



This is a
dirty job!

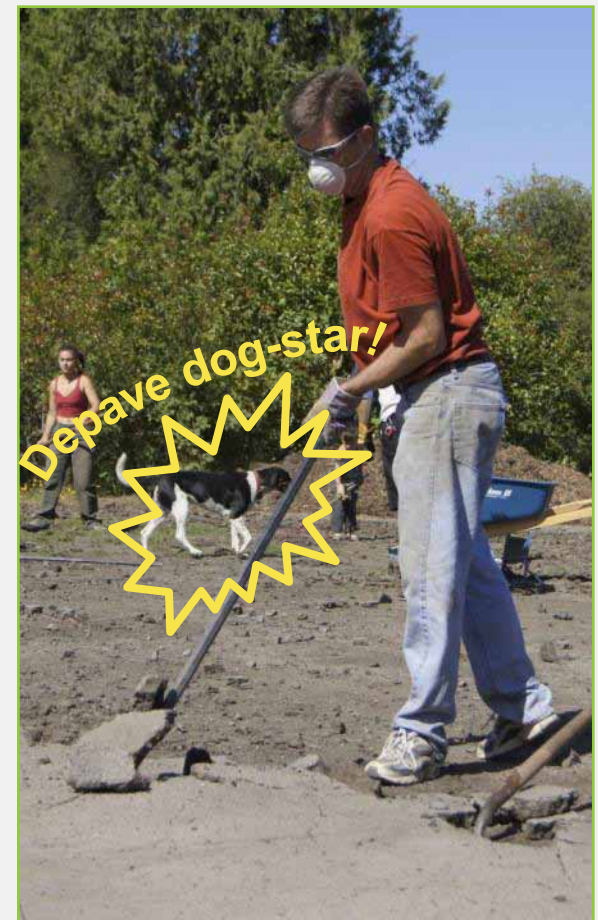
Image from Google

7 Depave!



Safety and Tools

- Safety demonstration
- Appropriate attire
 - Long pants
 - Close-toed shoes
 - Gloves
 - Safety mask and goggles
- Tool options:
 - Breaker (pry) bar
 - ü Depave approved!
 - Pickaxe
 - Sledgehammer
 - Jackhammer
 - Bobcat



8 Soil Rehabilitation

- Gravel removal – just as impervious!
- Soil compaction damages soil – need to re-introduce micro-organisms and nutrients
- Rehabilitate with topsoil, compost, organic matter
- Phytoremediation: use of plants to absorb pollutants from soil



9 Post-Depaving



Outdoor Learning Garden/Playscaped Area



Bioswale or rain garden



Food garden/Community garden



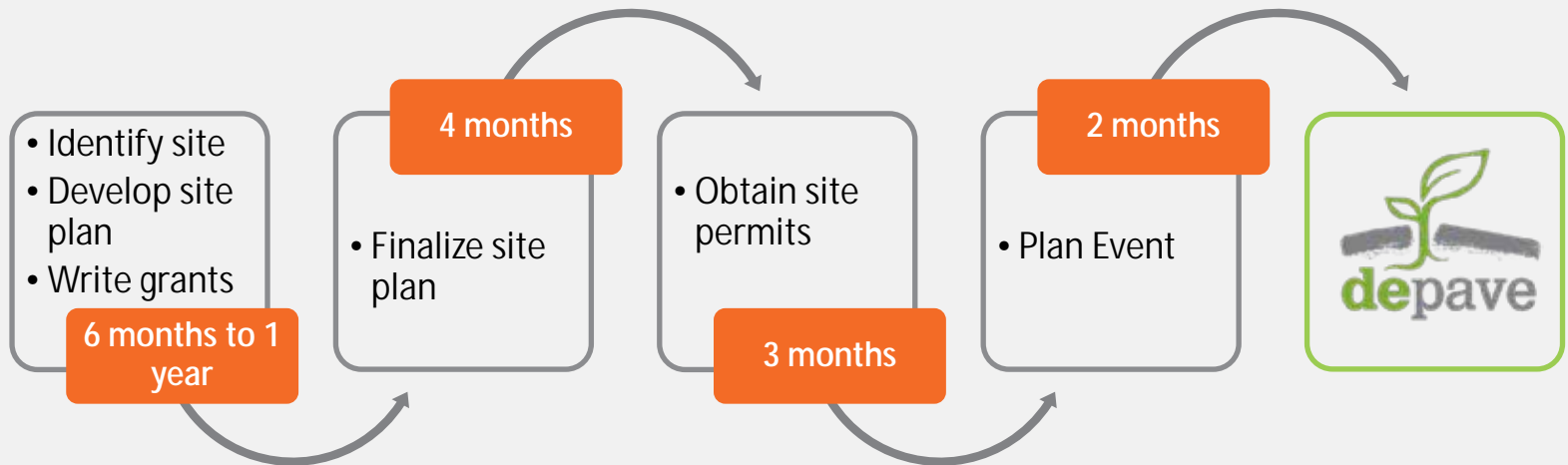
Forest garden and naturescaping

10 Maintenance

- Need long-term maintenance plan
- Level of maintenance depends on post-depaving development
 - Example: Garden vs. Bioswale
- Community partners
 - Friends of Portland Community Gardens
 - Urban Farm Collective
 - Growing Gardens



Timeline





Tips for Residential Depavings

- Organize your own depaving event and with online Depave Community Forum
 - www.depave.org/forum
 - Get technical assistance
 - Borrow Depave tools
 - Connect with volunteers
- Depave-It-Yourself Educational Workshops
 - Hands-on class
 - Self-funded
 - Depave-led

What's Next for Depave

- Planting parties at depaved sites
 - Fall 2010 – Winter 2011
- Depaving events:
 - Our Happy Block (SE Portland) – April/May 2011
 - James John School (N Portland) – Summer 2011
 - Chief Joseph School (N Portland) – Late 2011 – 2012
- Educational workshops
- 2nd Annual Bowling Fundraiser & Raffle
 - Saturday, January 8, 2011
 - AMF Pro 300 Lanes, SE 31st and Powell
- International Depave Conference 2012





How to Get Involved

- Sign up at www.depave.org/volunteer
- Volunteer Opportunities:
 - Volunteer Communications
 - Site Planning
 - Grantwriting
 - Educational Workshop Leaders
 - Outreach
 - Policy/Advocacy
 - Conference Planner
- Donate online via PayPal



Resources

www.depave.org

- City Repair: www.cityrepair.org
- East Multnomah Soil & Water Conservation District: www.emswcd.org
- Friends of Portland Community Gardens: www.friendspxgardens.org/
- Growing Gardens: www.growing-gardens.org/
- Lead in Home Garden and Urban Soil Environment: www.extension.umn.edu/distribution/horticulture/DG2543.html
- Portland BDS Site Development Permits: www.portlandonline.com/bds/index.cfm?c=36670
- Urban Farm Collective: www.urbanfarmcollective.com/



This used to be a parking lot.